

Identification of VULKAN Couplings

VULKAN Kupplungs- und Getriebebau	Telephone: +49 2325 922-0
B. Hackforth GmbH & Co. KG	Fax: +49 2325 71 110
After Sales Department	Email: info@vulkan.com
Heerstraße 66	Internet: www.vulkan.com
D - 44653 Herne	

Dear Sir or Madam,

the **commission number** is what Vulkan Germany calls a sales order number and assigns to the sales order for the element, metal parts or the whole coupling. Commission numbers will assign one-time to each customers order and stamped multiple times in metal parts into the coupling to exactly identify different parts. Furthermore the documentation of delivery-notes, invoices or classification certificates comprised the commission number.

Due to the technical influence the commission numbers sometimes looks a little bit different in it's digits. Please have a look on this short overview based on the time-period of year:

before 1977 XXXXX (example: 84.321)
 XXXXX = Commission number to the customers order

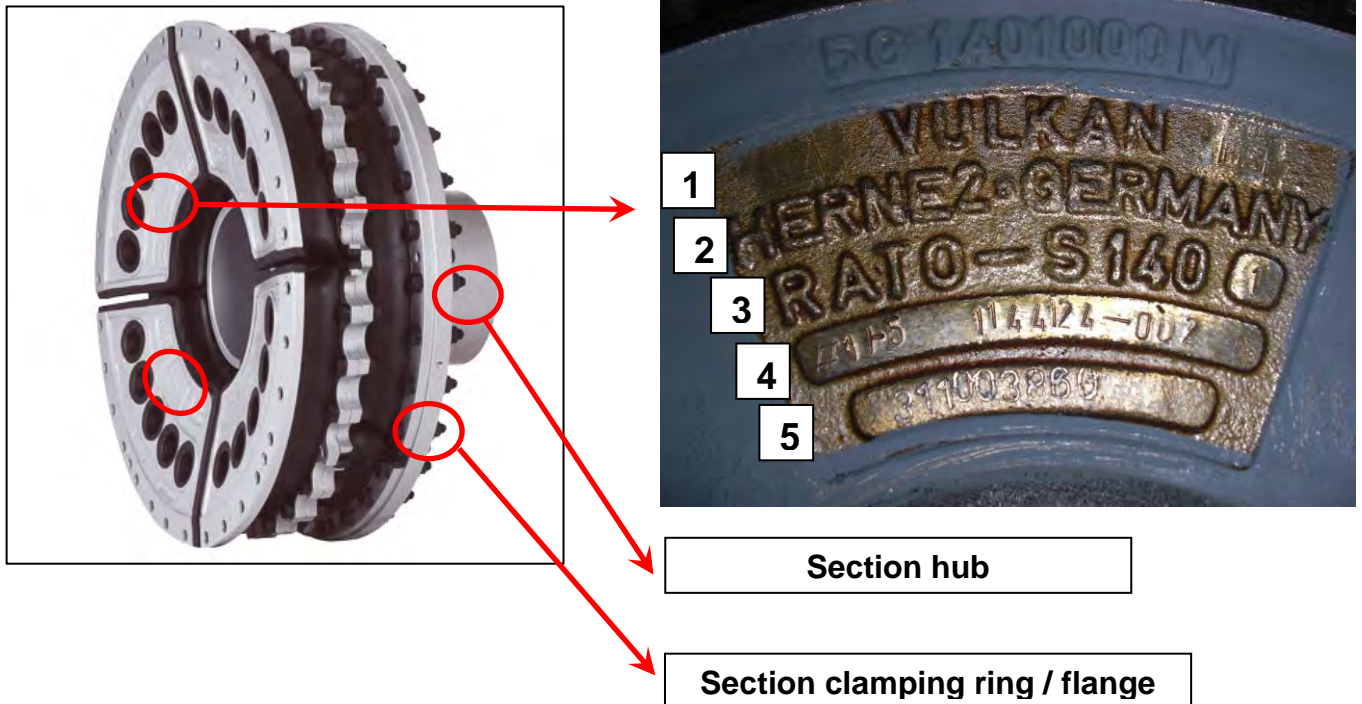
from 1977 until 1999 XXXX - 0 /YY - 0 (example: 5218-0/99 or 0351/84-2)
 XXXX = Commission number to the customers order
 YY = Year of sales order

from 2000 until 2005 XXXXX - 0 /YY - 0 (example: 47846/02 or 61655/04-1-4)
 XXXXX = Commission number to the customers order
 YY = Year of sales order

since 2005 ZZZYXXXXX (example: 310501234 or 311001234)
 ZZ = Identification to the type of sales order
 31... = commission number (example: 3110XXXXX)
 32... = delivery note (example: 3210XXXXX)
 33... = invoice / proforma invoice (example: 3310XXXXX)
 YY = Year of sales order
 XXXXX = Commission number to the customers order

Identification of VULKAN Couplings

Rato-S



Line 1 + 2: VULKAN company's data (example: VULKAN HERNE 2 Germany)

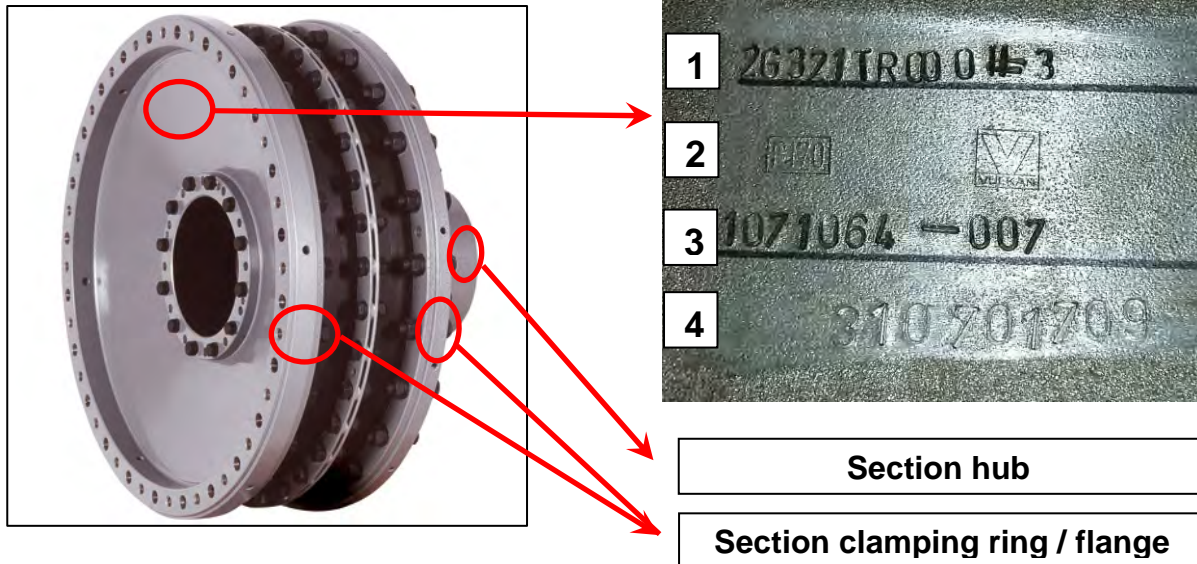
Line 3: RATO-S segment with the size and stiffness (example: RATO-S 140 1)

Line 4: Production control information stamped in the raised pad. (example 1144124 - 002)

Line 5: Commission Number (ZZYYXXXXX example: 311003860)

Identification of VULKAN Couplings

Rato-R



Line 1: Identification of (example: 2G321TR000 #3)

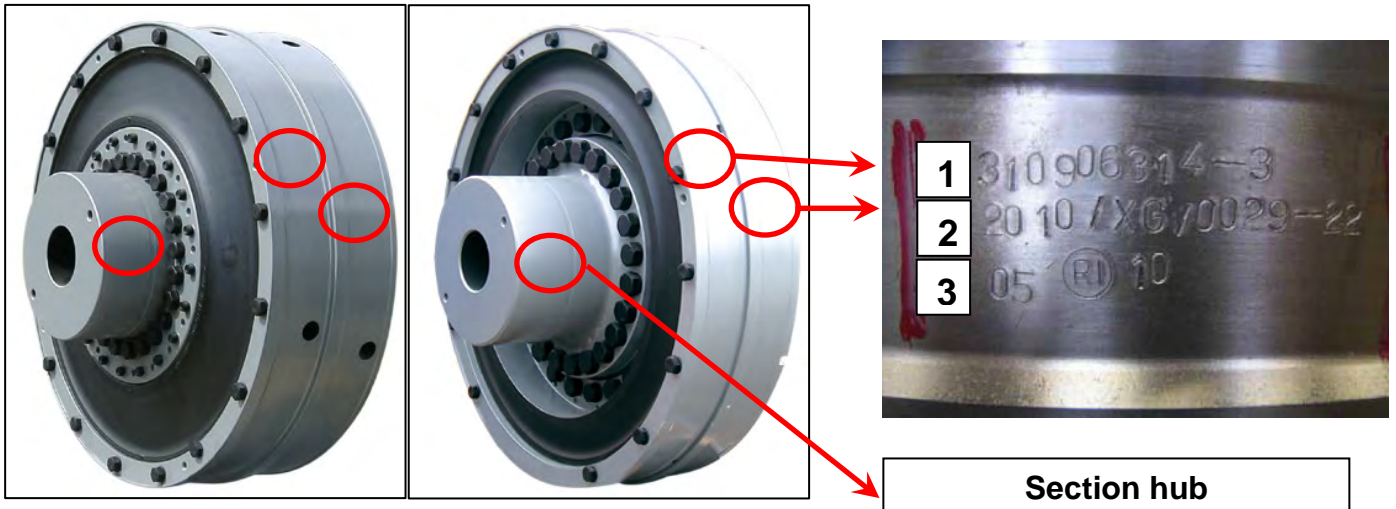
Line 2: VULKAN company's data (example: VULKAN)

Line 3: Production control information stamped in the raised pad. (example 1071064 - 007)

Line 4: Commission Number (ZZYYXXXXX example: 310701709)

Identification of VULKAN Couplings

Rato DG / DS



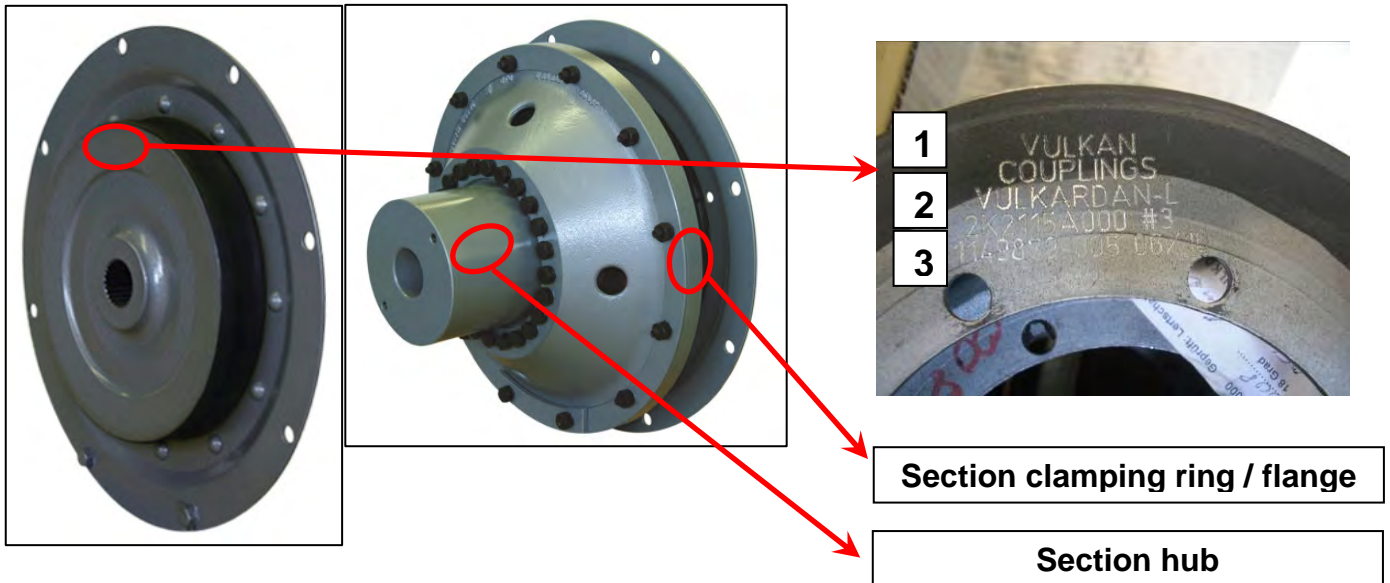
Line 1: Commission Number (ZZYYXXXXX example: 310906314 - 3)

Line 2: data of classification number (example: 2010 / XG / 0029 -- 22)

Line 3: commissioning date of classification (example: 05 R 10)

Identification of VULKAN Couplings

Vulkardan E / L



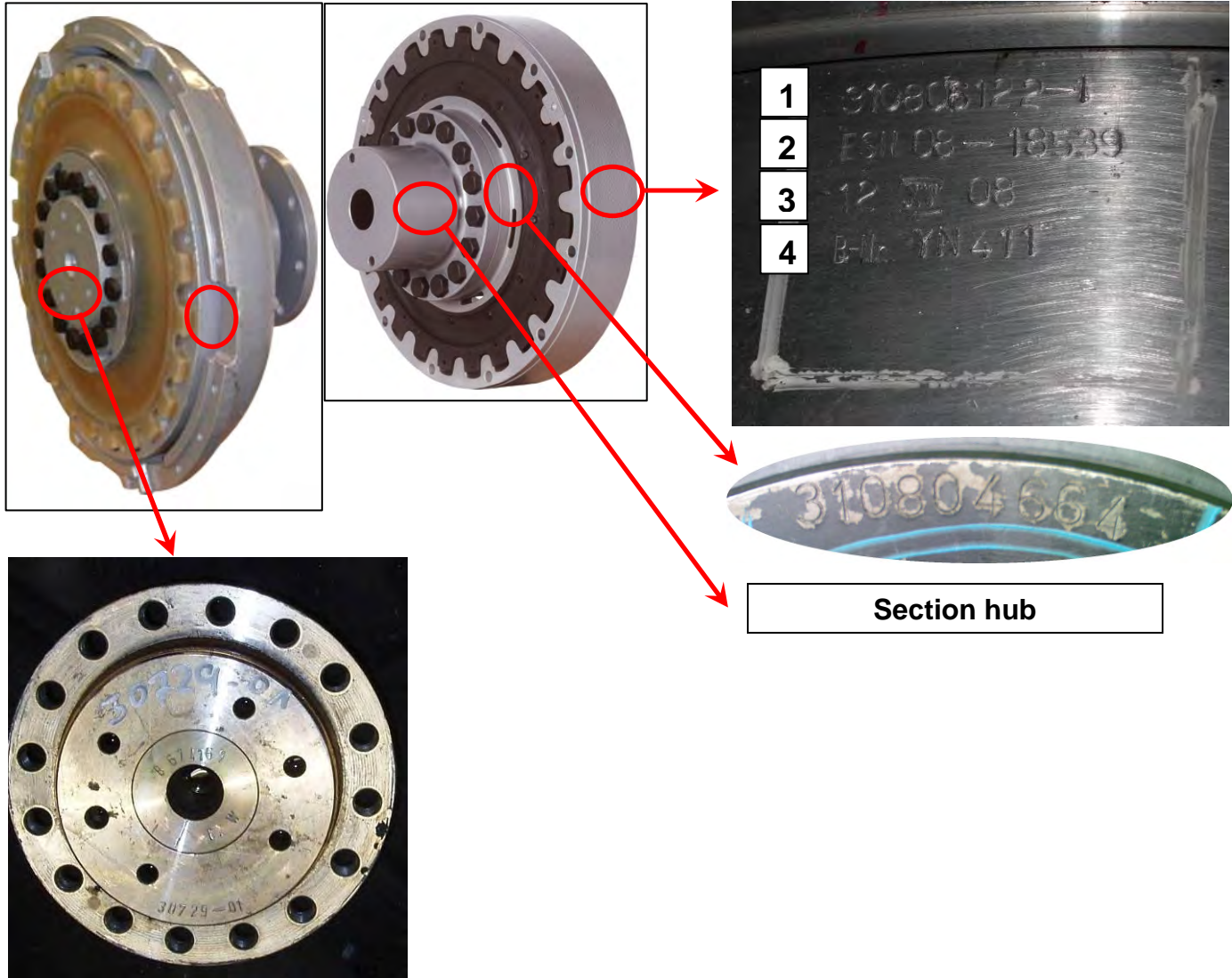
Line 1: specification of coupling (example: VULKAN COUPLINGS VULKARDAN-L)

Line 2: data of coupling element (2K2115A000 #3)

Line 3: Production control information (example: 1149879-005 06/10)

Identification of VULKAN Couplings

Vulastik-L / Anflanschaussenlager



Line 1: Commission Number (ZZYYXXXX example: 310806122 -1)

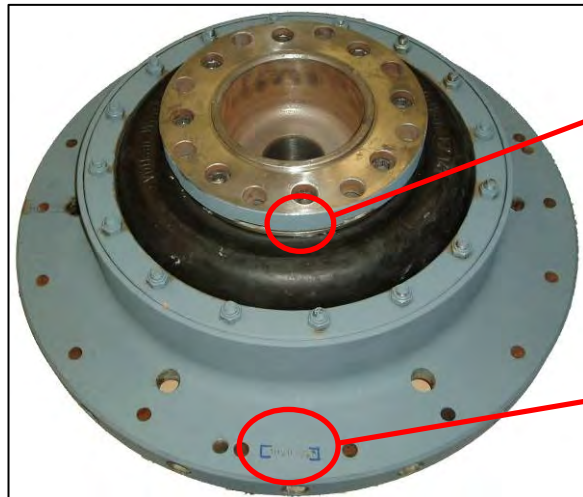
Line 2: data of classification number (example: ESN 08 - 18539)

Line 3: commissioning date of classification (example: 12 NV 08)

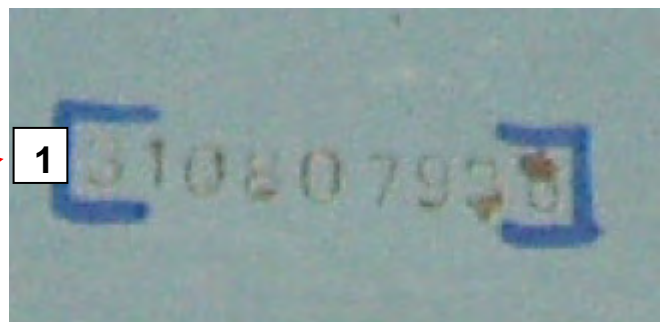
Line 4: hull no. (example: B-Nr.: YN 411)

Identification of VULKAN Couplings

EZ



Section hub



Line 1: Commission Number (ZZYYXXXXX example: 310807938)

Identification of VULKAN Couplings

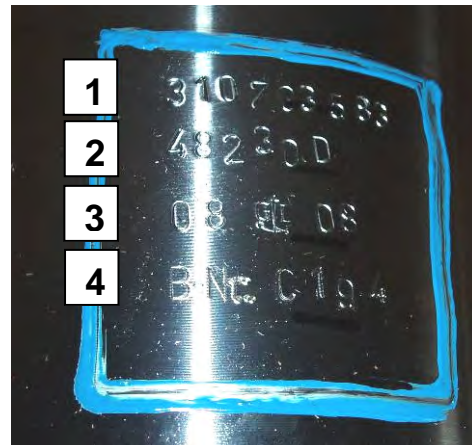
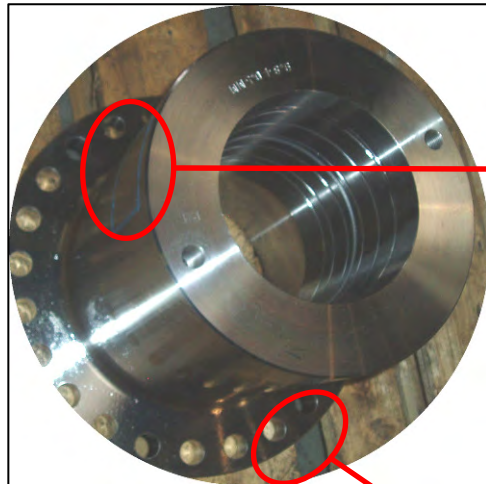
Meslu



Line 1: Commission Number (XXXX - X - YY - X example: 2342 – 5 – 87 – 00/0)

Identification of VULKAN Couplings

Hub



Line 1: Commission Number (ZZYYXXXXX example: 310703583 -1)

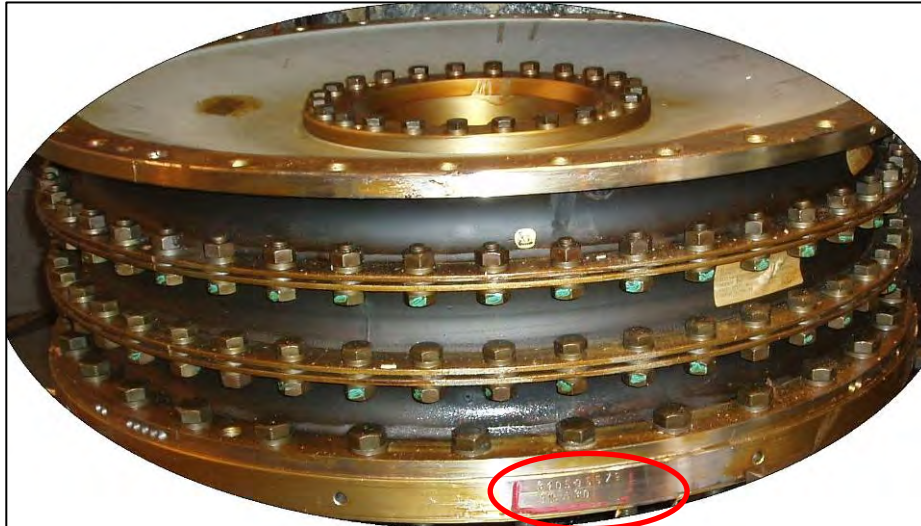
Line 2: data of classification number (example: 48230D)

Line 3: commissioning date of classification (08 GL 08)

Line 4: hull number (example: B Nr.: C194)

Identification of VULKAN Couplings

Clamping ring or flange



Line 1: Commission Number (ZZYYXXXXX example: 310508579)

Line 2: hull number (example B.Nr 530)

Identification of VULKAN Couplings

Sales order / order acknowledgement

Order Acknowledgement

Sales Order: **310906381**
Sales Order Date: 15.12.2009
Print Date: 23.07.2010

Profit Centre:
Order Processing:
Technical Support:
Dispatch Department:

Customer:
Customer's Reference:
Order Number:
Order Date:
Agent:

Delivery note

Delivery-Note **32105529**

Date: 21.07.2010
Sales Order: **310906381**

Profit Centre:
Order Processing:
Dispatch Department:

Customer:
Customer's Reference:
Order Number:
Order Date:
Agent:

Forwarder Agency:

Identification of VULKAN Couplings

Invoice / proforma invoice

Invoice

Invoice-Nr.: 33105215

Date: 21.07.2010

Sales Order: 310906381

Profit Centre:

Order Processing:

Dispatch Department:

Customer

Customer's Reference:

Order Number:

Order Date

Agent:

Forwarder Agency:

Proforma Invoice

Sales Order: 310906381

Sales Order Date: 15.12.2009

Print Date: 23.07.2010

Profit Centre:

Order Processing:

Technical Support:

Dispatch Department:

Customer:

Customer's Reference:

Order Number:

Order Date:

Agent: